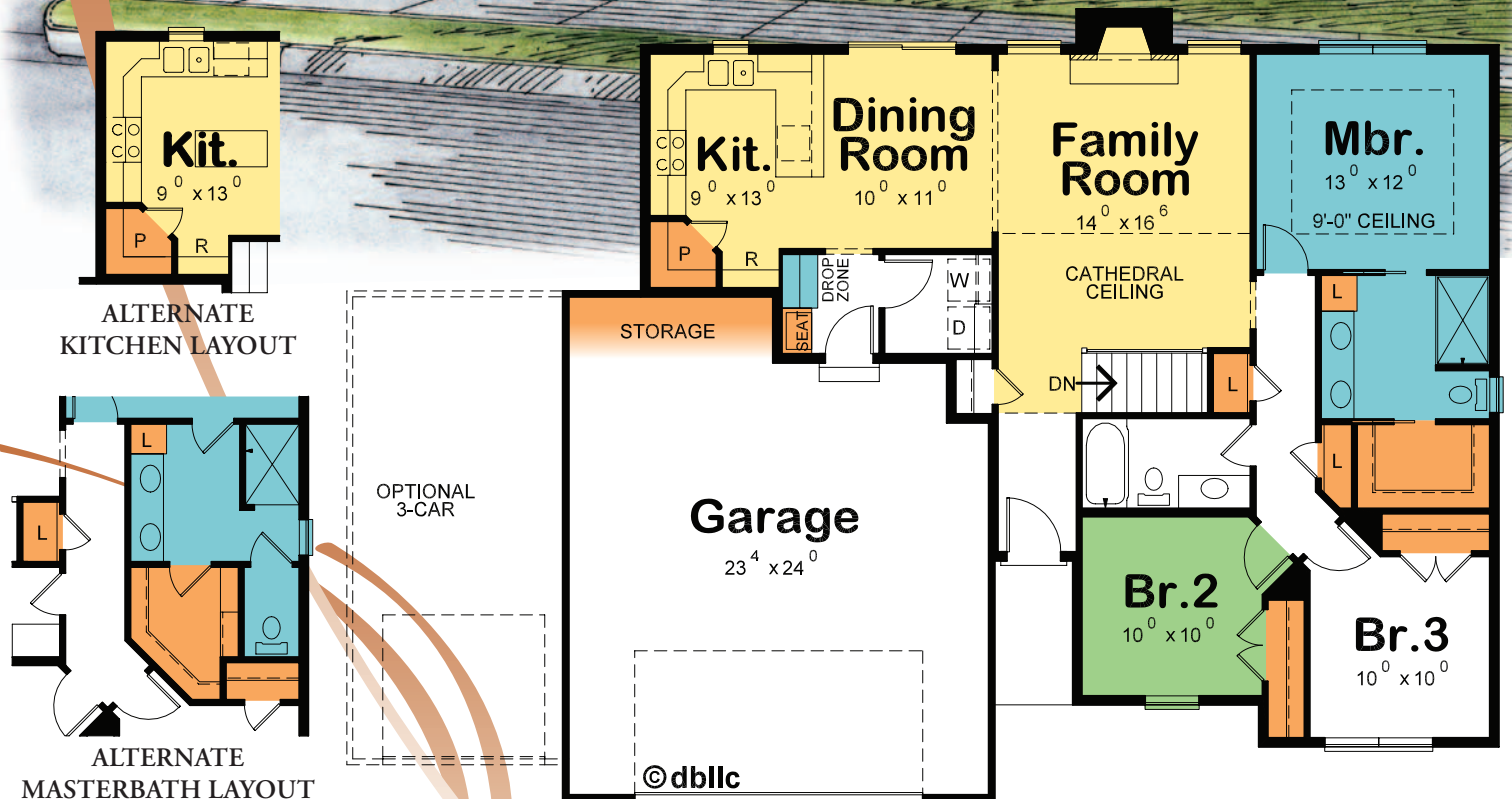
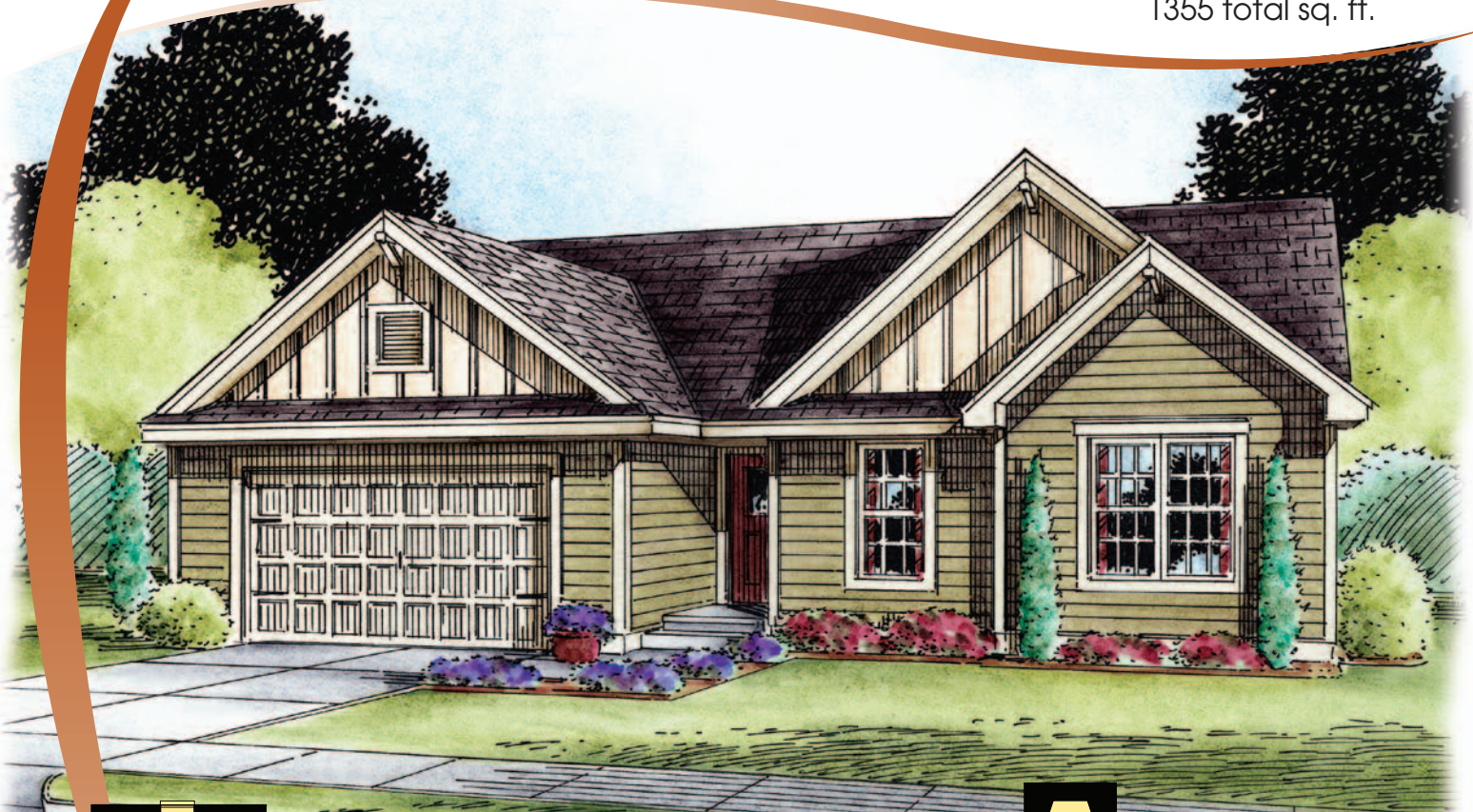


# the BRIDGER

1355 total sq. ft.



### Livability at a Glance

- entertaining
- de-stressing
- flexible living
- storage

FREEDOM HOME GROUP LLC

Custom Homes  
& Additions

PHONE: (406) 216-3336

FREEDOMHOMEGROUP.COM

# the BRIDGER

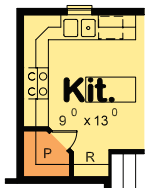
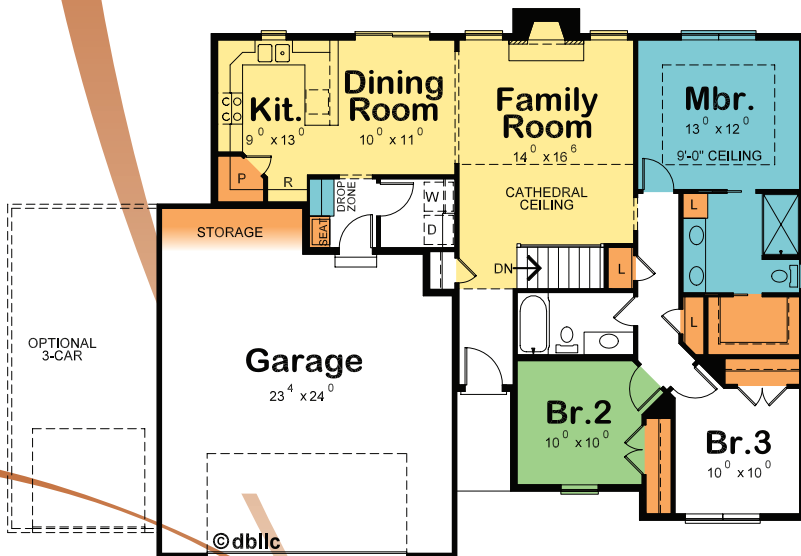
1355 total sq. ft.



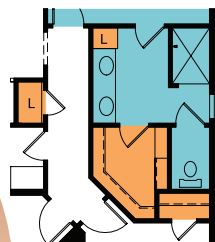
ALTERNATE ELEVATION

### Livability at a Glance

- entertaining
- de-stressing
- flexible living
- storage



ALTERNATE KITCHEN LAYOUT



ALTERNATE MASTERBATH LAYOUT

Notice what you didn't just do. You didn't walk into the home from the garage and traipse through the laundry room—only to be greeted by piles of dirty laundry! Rather, our Bridger design has a separate laundry room plus a handy bench in the home's rear foyer entry to make removing shoes a snap. Make quick work of unloading groceries in this home, as it's just a couple more steps to the kitchen served by a corner walk-in pantry.

In this home you can choose from two kitchen layouts, two master bath/closet designs, and an optional bayed dining room extension. The family room elicits oohs and aahs with the drama of its cathedral ceiling flanked by windows and warm fireplace. Two secondary bedrooms are privately situated to the front of the home, where bedroom #2, with the addition of a door directly accessing that space from the covered stoop, is easily adapted to a home office.

# STONE MEADOWS

FREEDOM HOME GROUP LLC

Custom Homes  
& Additions

PHONE: (406) 216-3336

FREEDOMHOMEGROUP.COM



YOUR EXCLUSIVE WOMAN-CENTRIC HOME BUILDER

REALTOR

**Beth Schoenen**

406.899.8784

REMAX OF GREAT FALLS

