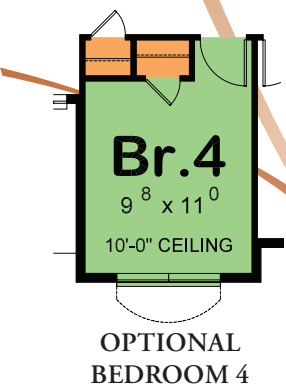
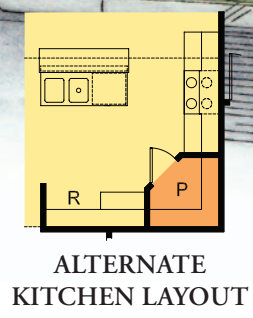
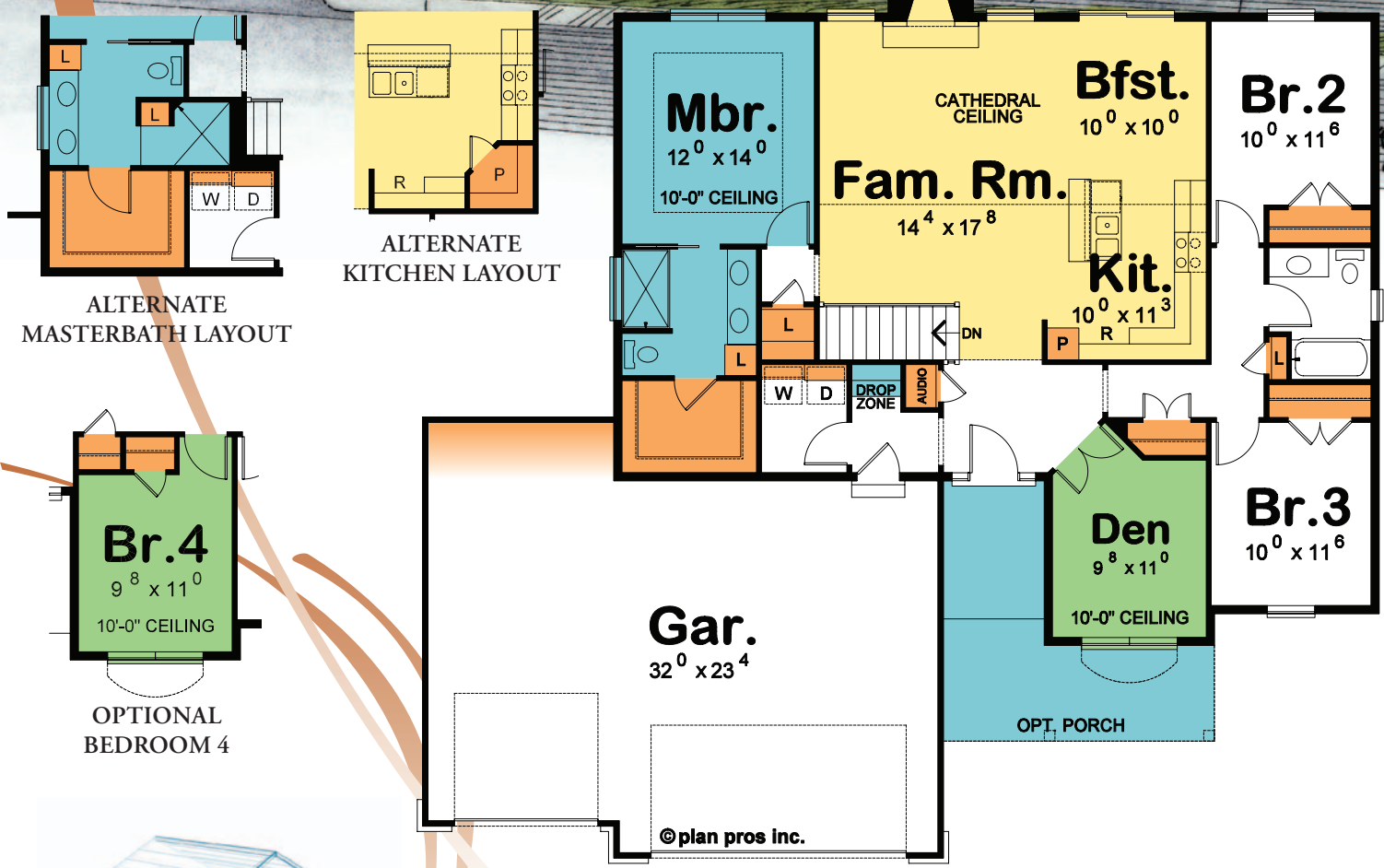
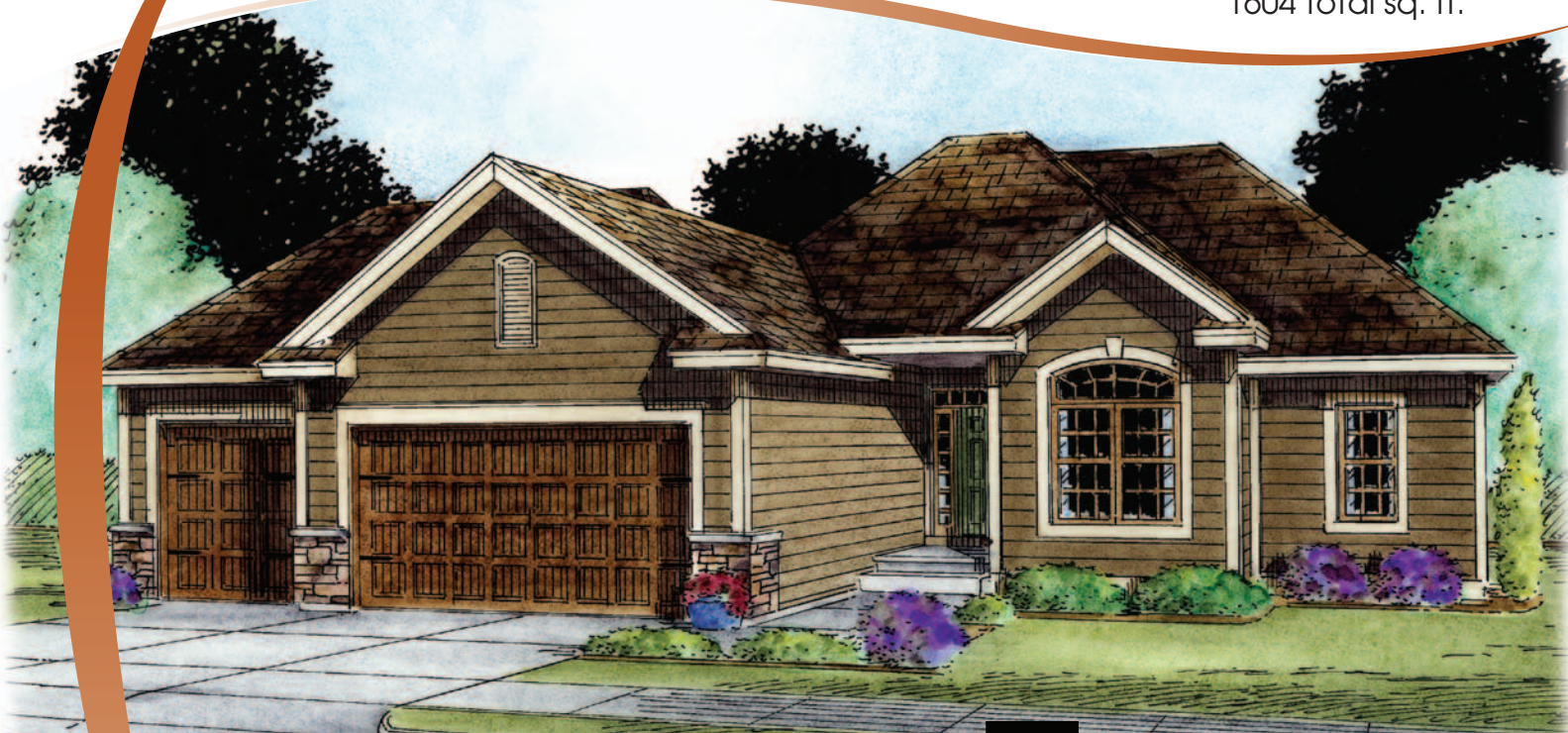


the MADISON

1604 total sq. ft.



FREEDOM HOME GROUP LLC
 Custom Homes
 & Additions

PHONE: (406) 216-3336

FREEDOMHOMEGROUP.COM

Livability at a Glance

- entertaining
- de-stressing
- flexible living
- storage

© plan pros inc.

the MADISON

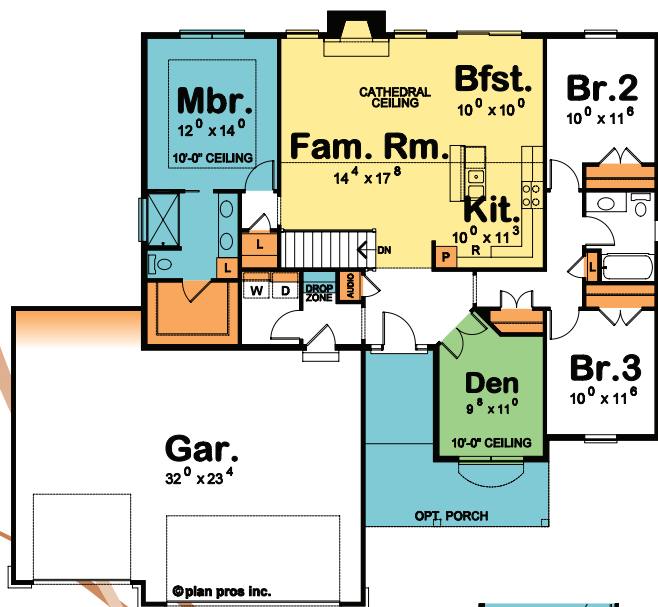
1604 total sq. ft.



ALTERNATE ELEVATION

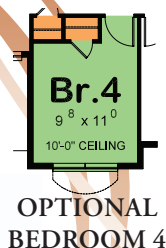
Livability at a Glance

-
 entertaining
 -
 de-stressing
 -
 flexible living
 -
 storage



Talk about flexibility in a home design, our new Madison plan can be configured for numerous homeowner preferences! As originally shown, there's 3 bedrooms plus a den just off the entry. If you have a home-based business, the den is a natural office space with the addition of a door from the covered stoop. Need more space for that home business? Consider a pocket door between the office and bedroom #3. Similarly, with that pocket door could transform the bedroom #3 + den space into a wonderful in-law suite with the former den space serving as a private living room/entertaining space.

And the Madison offers so much more... there's the open, entertaining "core" that keeps everyone connected... a secluded master bedroom with two bathroom layouts (check out the walk-in shower option with no door to clean—ever!... and well-thought-out storage throughout. This home was truly designed with livability in mind!



STONE MEADOWS

FREEDOM HOME GROUP LLC

Custom Homes & Additions

PHONE: (406) 216-3336

FREEDOMHOMEGROUP.COM



YOUR EXCLUSIVE WOMAN-CENTRIC HOME BUILDER

REALTOR

Beth Schoenen

406.899.8784

REMAX OF GREAT FALLS

