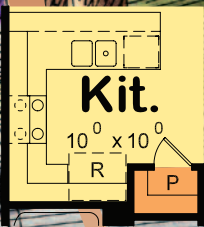
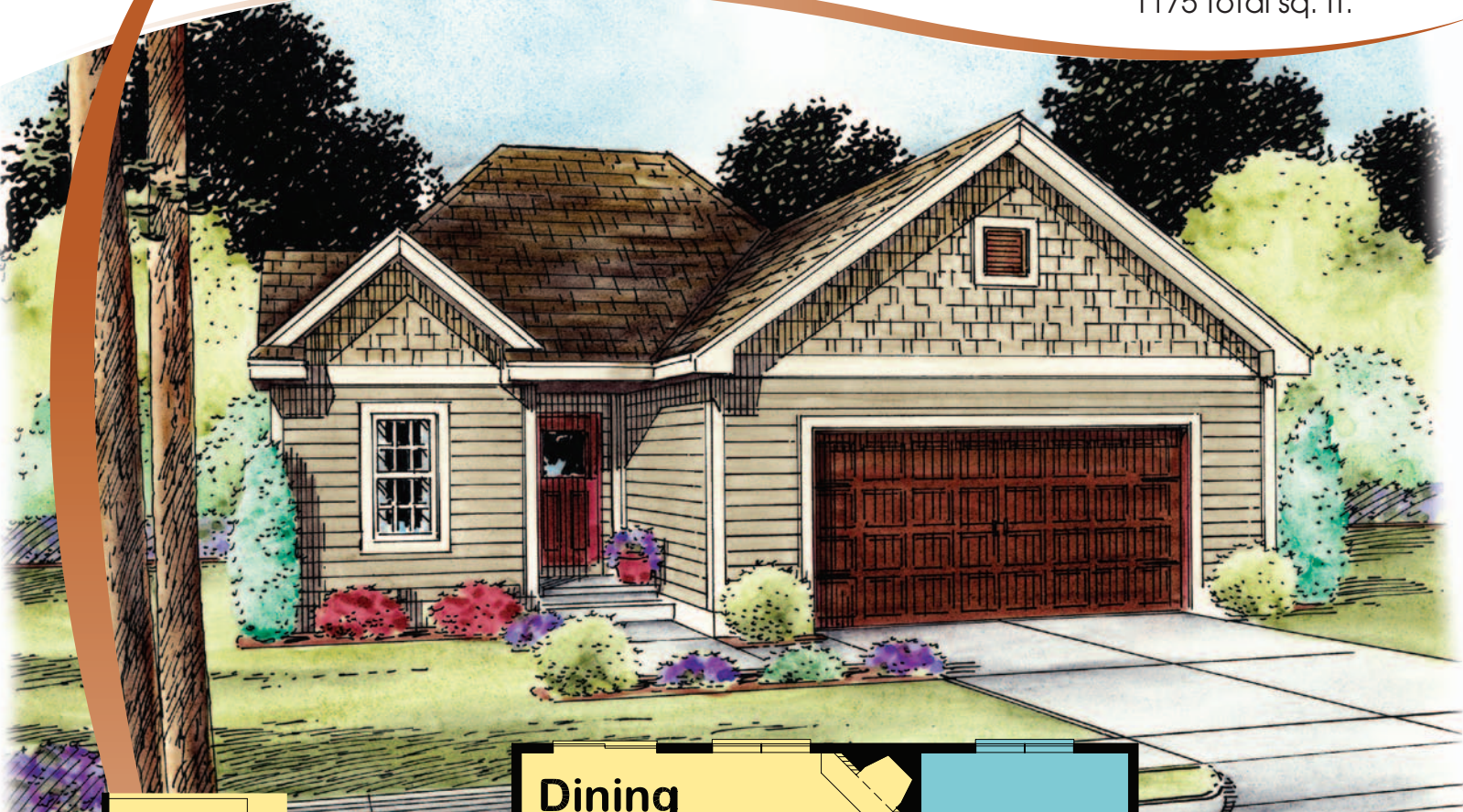
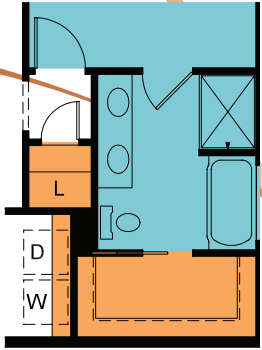


the STONEWALL

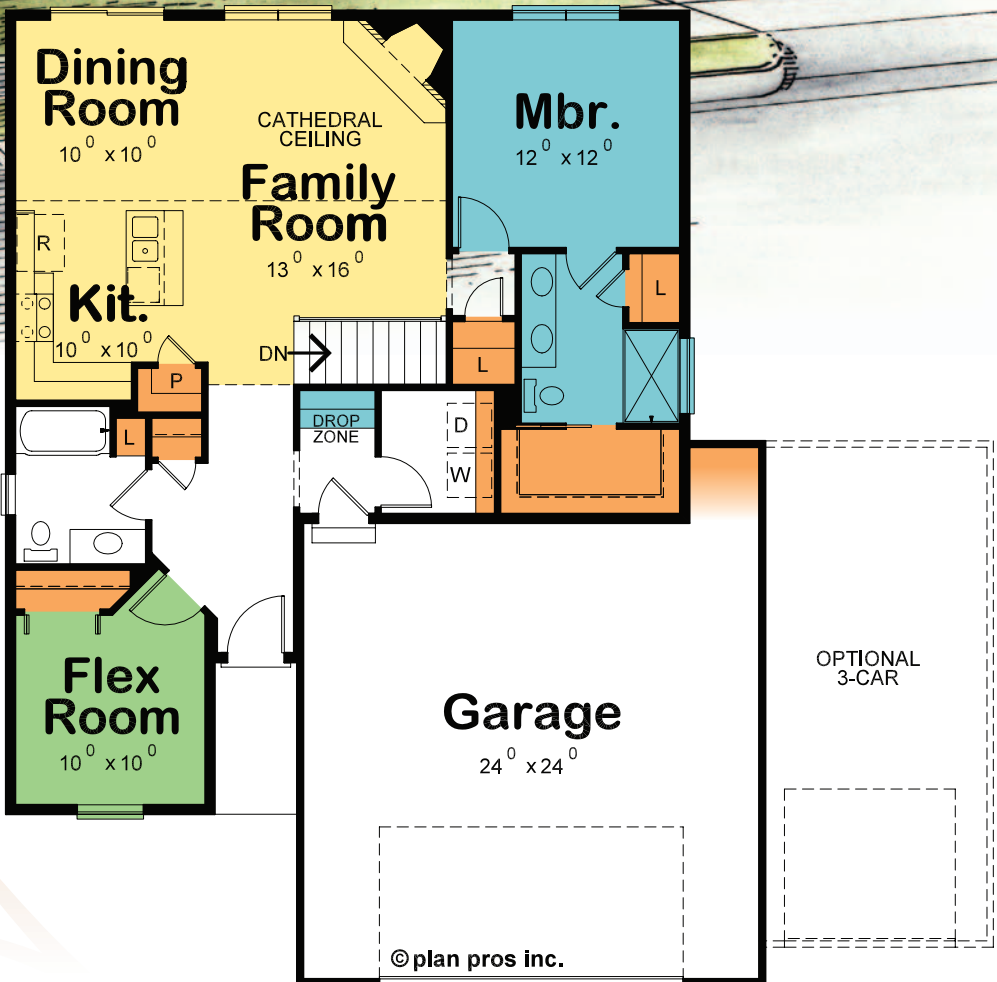
1175 total sq. ft.



ALTERNATE KITCHEN LAYOUT



ALTERNATE MASTERBATH LAYOUT



© plan pros inc.

OPTIONAL 3-CAR

Livability at a Glance

- entertaining
- de-stressing
- flexible living
- storage

FREEDOM HOME GROUP LLC

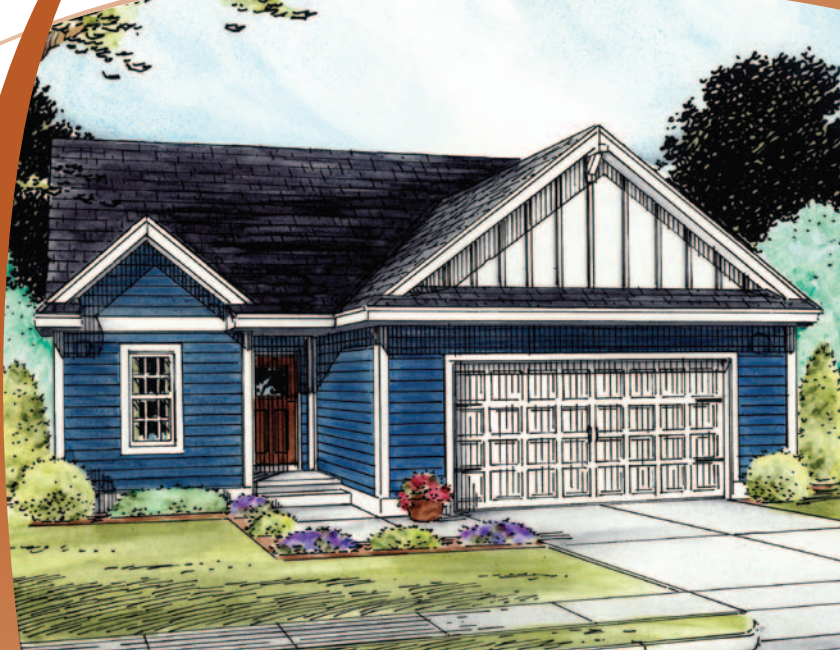
Custom Homes & Additions

PHONE: (406) 216-3336

FREEDOMHOMEGROUP.COM

the STONEWALL

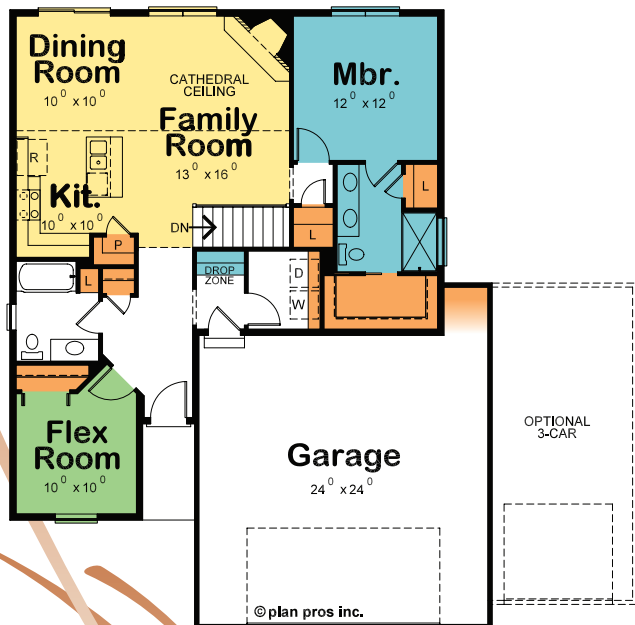
1175 total sq. ft.



ALTERNATE ELEVATION

Livability at a Glance

entertaining de-stressing flexible living storage



Singles...professional couples...empty nesters...many buyers today are looking at more modest homes that truly live well. Our Stonewall design entertains beautifully with its open design and wonderful views out the back. Whether you select the island or peninsula kitchen layout, there's an extra-deep pantry that's sure to please.

Great storage is hard to achieve without having lots of square footage, but the Stonewall also boasts two deep linen closets for the master suite, plus storage in the laundry as well as storage in the generous garage. Add a third garage stall and the home is still well-under 50 feet in width, meaning it fits most any homesite. Possibilities for finishing the lower level are limited only by your imagination. And the flex room up front—how would you use that space?



FREEDOM HOME GROUP LLC

Custom Homes & Additions

PHONE: (406) 216-3336

FREEDOMHOMEGROUP.COM



YOUR EXCLUSIVE WOMAN-CENTRIC HOME BUILDER

REALTOR

Beth Schoenen

406.899.8784

REMAX OF GREAT FALLS

